



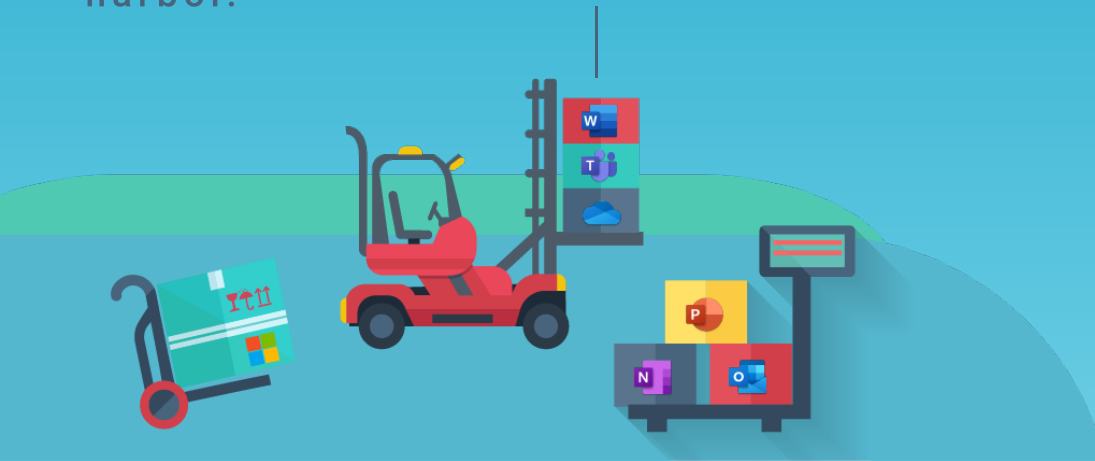
# SHAREPOINT

a little different



Think of a SharePoint Hub Site as a container ship.

Apps and Services are coming in different packages to your harbor.



To make sure your packages don't get smudged, they are stored in containers. These are your Team and Communication Sites.



The whole harbor is your SharePoint environment with many ships (Hub Sites), carrying your containers (Team & Communication sites) with great packages (Apps & Services).

